



10 FEBRUARY – 4 JUNE 2017

2016

EXIT ART

2016 NT
YEAR 12
STUDENT
EXHIBITION

Exit Art is the annual exhibition of outstanding artwork created by Northern Territory Certificate of Education and Training senior students. The exhibition of works by 2016 Year 12 students represents 14 schools from Darwin and regional and remote areas.

The exhibition at the Museum and Art Gallery of the Northern Territory is a celebration of the talent and creativity of the Territory's next generation of visual artists. It provides us with an insight into the unique ideas, influences and experiences of young people, and represents the topics that have captured their imaginations throughout the past year. This year's exhibition showcases the work of 45 students working across diverse subject areas and mediums, including: painting, drawing, photography, design, digital imaging, sculpture and film.

The exceptional quality of this year's exhibition is testament to the students and the invaluable contributions of teachers, families and the community in nurturing their artistic talents and creative thinking. Congratulations to all the students who have contributed to Exit Art and to those who have supported them throughout their years of education.

The Museum and Art Gallery of the Northern Territory and The Department of Education wish them every success in the future.

MERIT AWARDS

Merit Awards are awarded to students who received an A+ merit.

2016 Merit Award recipients:

Tully Hemsley, Visual Arts

Lana Laureles, Visual Arts

Jessica Osborne, Creative Arts

ARTISTS

Alexandra O'SHEA	4	Jill FLOCKHART	33
Ally SLACK	5	Joshua FORD	34
Amber BLUMBERG	6 – 7	Julia WOODS	35
Arlene DELA CRUZ	8	Juliette PURUNTUNTAMERI	36
Ashleigh OLIVER	9 – 10	Kadu BARNs	37
Babongile NDLOVU	11	Kaila GORDON	38
Brad HYSEN	12	Kate CAMPBELL BROGAN	39
Brianna MCGILLIVRAY	13	Kylie LO	40 – 41
Bryan MANGUBAT	14	Lana LAURELES	42 – 43
Caitlin HAWTHORNE	15	Laura SIMON	44
Celina LLOYD	16 – 17	Lilly PAZNIEWSKI	45
Chantelle WEIPPERT	18	Louis LEJEUNE	46
Ella MOREEN	19	Mai ROSE	47 – 48
Emmelyn MARLOW	20	Marmie BOWEN	49
Eva BATEY FRANCES	21	Pio GILLMAC III	50
Georgia BARRADEEN	22	Rebecca PEARCE	51
Isobel MCGARRY	23	Ruby ROBERTSON-POWER	52 – 53
Jan DANIELLE DOMINIGO	24 – 25	Shania PURUNTATAMERI	54
Jasmine BROOKS	26	Tianndra CAMPBELL	55
Jeb CROWDER	27	Tommy TRAN	56
Jeffrey MCDONALD	28 – 29	Tully HEMSLEY	57 – 58
Jessica STASSI	30	William TARRANT	59
Jessica OSBORNE	31 – 32		

Alexandra O'SHEA

CASUARINA SENIOR COLLEGE

Companionship

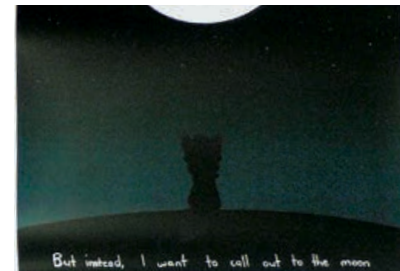
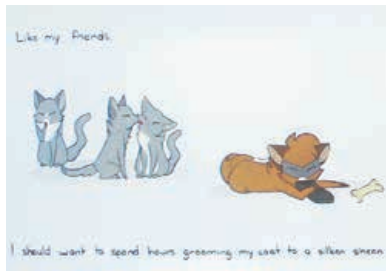
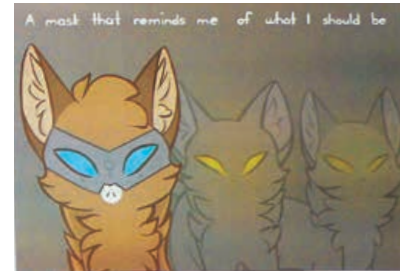
Pencil on watercolour paper

72cm x 51cm

I was inspired by the way humans can form a relationship with animals, which can create an unbreakable bond. By using coloured pencils, I was able to demonstrate how much colour animals can bring to what can sometimes be a boring life.

Black and white graphite contrasts with the colours of watercolour and pencil.





Ally SLACK

NORTHERN TERRITORY
SCHOOL OF DISTANCE EDUCATION

If only

Digital prints

21cm x 29.7cm each (9/16 prints)

If only is a story board that explores the concept of discrimination and conformity within society, in particular, the representation of transgendered people and the inequality they face on a daily basis.

Amber BLUMBERG

ST PHILIP'S COLLEGE

Mermaid's tail

Mixed media

110cm x 40cm x 90cm

Inspired by mythology and recycled artworks by artists Douglas Coupland, Ptolemy Elrington, Kelly Rene Jelinek and Robert Bradford, this sculpture highlights the impact humans have on the environment and the detrimental effects of human consumption on our world, including marine life.

The tail is covered in lights to represent radioactivity that can affect marine life due to chemical spills and other pollution.



Amber BLUMBERG

ST PHILIP'S COLLEGE

Inner demons

Synthetic polymer paint and plaster
on watercolour paper on board
105cm x 50cm

This work speaks of the way mental illness can be seen in society as a form of demon.

Artists Hugo Van der Goes, Kathe Kollwitz, Georgia O'Keeffe and Francisco Goya inspired me to use my feelings and the events in my life to create works that are thought provoking and intense.

Inner demons represents the mental illness the girl feels. Anxiety in her chest makes everyday tasks difficult and taints everything in her life. The ripped paper symbolises her emotional barrier and how exposing the inner demons makes her vulnerable to public opinion.



Arlene DELA CRUZ

PALMERSTON SENIOR COLLEGE

Multitude years of years

Synthetic polymer paint on canvas

75cm x 50cm

Multitude years of years was inspired by the designs, colour-combinations and structures of the buildings in Italy. By painting this, I automatically felt more connected to the country itself.



Ashleigh OLIVER

CASUARINA SENIOR COLLEGE

Attack of the drop bear

Pencil on Fabriano paper

50cm x 35cm

The aim of this work was to explore Australian culture through the study of many artists from around the world and to see how I could express my culture through an artwork.

Using layering and pencil work on high quality Fabriano paper I gave my work a three dimensional effect.

Attack of the drop bear is based on the legend of drop bears in Australia.



Ashleigh OLIVER

CASUARINA SENIOR COLLEGE

Open and closing doors

Papercut and lightbox

94.5cm x 63cm x 18.5cm

This artwork was inspired by a team of artist/storytellers who create paper cut and light box art.

My style uses thick white paper with different shaped cuts stacked on top of each other with foam board breakers between each layer. A light is placed at the back to highlight the different layers, the tonal differences and depth of the image.





Babongile NDLOVU

TENNANT CREEK HIGH SCHOOL

Pit fired form

Ceramic

40cm x 20cm

In Africa, my grandmother made pots and large ceramic vessels. I used to watch her clay work go round and round as she built them up with coils.

Making the pot came from a deep desire to follow in my grandmothers footsteps. I chose to pit fire and used fire clay and copper carbonate.



Brad HYSEN

CASUARINA SENIOR COLLEGE

Created to protect. Only destroys

Timber and spray paint

90cm x 90cm x 15cm

Created to protect. Only destroys makes a political statement and takes a stand on the global gun laws through the eyes of a year 12 student.

I represented the gun with the number of people killed by that brand of gun.

Inspired by artist Banksy, I used stencil designs and was influenced by his style of political messages, in particular his work *Rage the flower thrower*.

Brianna MCGILLIVRAY

ST PHILIP'S COLLEGE

Faceless

Digital photograph

(3/7 prints)

My series of photographs is a spin-off from Christopher McKenney's hauntingly surreal and disturbingly beautiful photography of human-like creatures from his exhibition *Beautiful Decay*. I created *Faceless* in response to McKenney's statement, "I only make the photos I do to express myself and what other people see or think is up to them".

My intention was to create thought provoking work that would leave the audience intrigued.





Bryan MANGUBAT

CENTRALIAN SENIOR COLLEGE

Bowerbird

Mixed media

60cm x 44cm x 35cm

Bowerbird explores the idea of a possession and the treasured memories we place on objects. The small metal cabinet shares personal objects, which represent people, places, and experiences. The slightly open drawers reveal groups of items; grandma's embroidery, shells, rocks, minitures, cartoon characters, toys, erasers, old post cards and holiday slides. Seated on top the bowerbird surveys his possessions.

Caitlin HAWTHORNE

GOOD SHEPHERD
LUTHERAN COLLEGE

Rosa Alba

Mixed media

59cm x 42cm

Practitioners Del Kathryn Barton, Trevor Weekes and Clifford Possum's indigenous totems inspired my work *Rosa Alba*. My name, Caitlin Rose Hawthorne, led me to explore the two plant names, their cultural origins and meaning.

My intention was to display the duality of sensitivity and brashness that comes with living in the Territory and show how the environment becomes part of who I am.



Celina LLOYD

KORMILDA COLLEGE

From Billabong to Boabs

Mixed media, watercolour
and pen on paper
50cm x 74cm (each)

Dreamscapes from Billabong to Boabs is a triptych about the landscapes of the Northern Territory and Western Australia linked to my Indigenous heritage. Inspired by artists Albert Namitjira and John Olsen's use of watercolour, I used the shapes of lily pads, magpie geese, broilgas, boab trees and scrub fowls as images for my contemporary designs.





Celina LLOYD

KORMILDA COLLEGE

Paper memories

Gamba grass, handmade paper
and ochre pigments
40cm x 200cm

Paper memories is linked to my family heritage. It is a comment on the Stolen Generation and represents the many Aboriginal girls that were taken from their families. My Nan was taken to the community of Mullewa 450 km from Perth.

I was inspired by the exhibition *Winsome Jobling: the nature of paper*.



Chantelle WEIPPERT

MARRARA CHRISTIAN SCHOOL

Seven

Synthetic polymer paint on canvas
90cm x 120cm

The work of Eugene Clark and Steven Burkett symbolises the dark nature of sin and inspired me to produce *Seven*.

In this work, I have portrayed the Seven Deadly Sins, challenging religion in today's modern society and questioning the way sin is romanticised and glamorised in popular culture.

Ella MOREEN

NORTHERN TERRITORY SCHOOL
OF DISTANCE EDUCATION AND
TIWI COLLEGE

Tiwi marking ground

Synthetic polymer paint on canvas

40cm x 25cm

For this work, I used the Tiwi colours of red yellow, white and black to paint Aboriginal designs and patterns that represent Aboriginal and Tiwi Island culture.



Emmelyn MARLOW

GOOD SHEPHERD LUTHERAN
COLLEGE

The living womb

Oil on Canson paper
55cm x 40.5cm

My approach was to use symbolism to create a portrait of my mamasita's (mother's) inner character. I added objects of high importance to my mum, to further symbolise her character and create a unity of composition.

Initially inspired by artist Frida Kahlo and the strong symbolism she used in many of her paintings, I used composition and an imaginative placement of objects. My personal aesthetic was to depict a strong symbolic and personal homage to my mama.





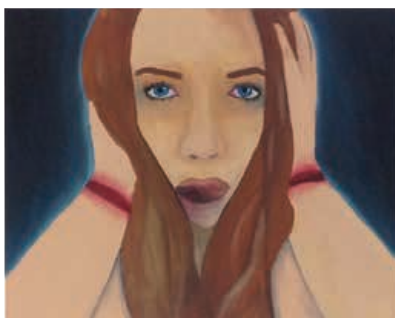
Eva BATEY FRANCES

ST PHILIP'S COLLEGE

Tea party
Photograph

Tea party is a photograph of my younger cousin playing with her tea set. In this work I have tried to capture the innocence of children in black and white.

I sought to capture the candid emotion of a child and the complete focus on her imaginary game; at the centre of the activity the child is absorbed in play.



Georgia BARRADEEN

O'LOUGHLIN CATHOLIC COLLEGE

Unnoticed – unseen, unheard, unspoken

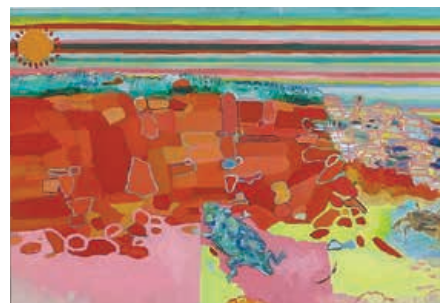
Oil on canvas

41cm x 51cm

Child abuse is a sad reality, we may know a victim or be one ourselves.

People see and hear things, yet never say anything, like the three monkeys; hear no evil, see no evil, speak no evil.

These three portraits represent the facts of child abuse. The discoloration of the bruised skin and the well thought through placement of each person aims to prompt social change within my generation, open conversation and find new ways to solve the basis of the problem.



Isobel MCGARRY

DARWIN HIGH SCHOOL

Samsara

Oil paint on wood

60cm x 90cm

Samsara is a body of work that tells a story concerning the mind, matter and body. It depicts human relationships with our external perception and inner mind. From the minerals that make up cliffs faces, to the cells of our cornea, it is all dust from the cosmos.

Jan DANIELLE DOMINIGO

CASUARINA SENIOR COLLEGE

Redemption

Digital photograph

56cm x 86cm

Driven by Todrick Hall's song *Over the Rainbow*, which tells the story of a boy growing up being different, I created the image of how my childhood would have looked if I wasn't locked in a jail of self-hate. It is also the image of my redemption, or of having my true self being hindered.

Redemption is the antithesis of *Unlabelled*; it is celebratory, as opposed to the dark and confrontational subject of *Unlabelled*.





Jan DANIELLE DOMINIGO

CASUARINA SENIOR COLLEGE

Unlabelled

Digital photograph

56cm x 86cm

A musician myself, I found a link between music and makeup. I found a gap that bridges audible euphoria and wildly imaginative mental imagery.

When I listen to a song I can feel its attitude and its vibe. I can visualise its face, if it had one. I can see its colours and its textures in a mental firework. The idea resembles synaesthesia paintings.

Jasmine BROOKS

NORTHERN TERRITORY SCHOOL
OF DISTANCE EDUCATION AND
TIWI COLLEGE

Rina

Photograph

90cm x 60cm

Researching the late 1800s colonial
photography of JW Lindt inspired me to
photograph my friend Rina in a similar
style. In order to communicate her
Tiwi culture and Milikapiti community,
I composed the photograph using
feathers, a woven mat and a printed
sarong to symbolise Rina's heritage.





Jeb CROWDER

NORTHERN TERRITORY SCHOOL
OF DISTANCE EDUCATION

Wolf spider

Spray paint, charcoal and
markers on ply board
76cm x 120cm

Wolf spiders inhabit all of Australia. Despite their frightening appearance they are quite timid and do not attack unless provoked.

In this work inspired by the wolf spider, I have blurred the background with a mix of quickly sprayed lines and colours that create a leaf litter-like appearance. The image of the spider is superimposed over the background using dull brown and green tones on the legs and body. Strong black line work defines the legs whilst thin lines add detail to the body in a stencil style.

Jeffrey MCDONALD

ST JOHN'S CATHOLIC COLLEGE

Crocodile and Lily weed

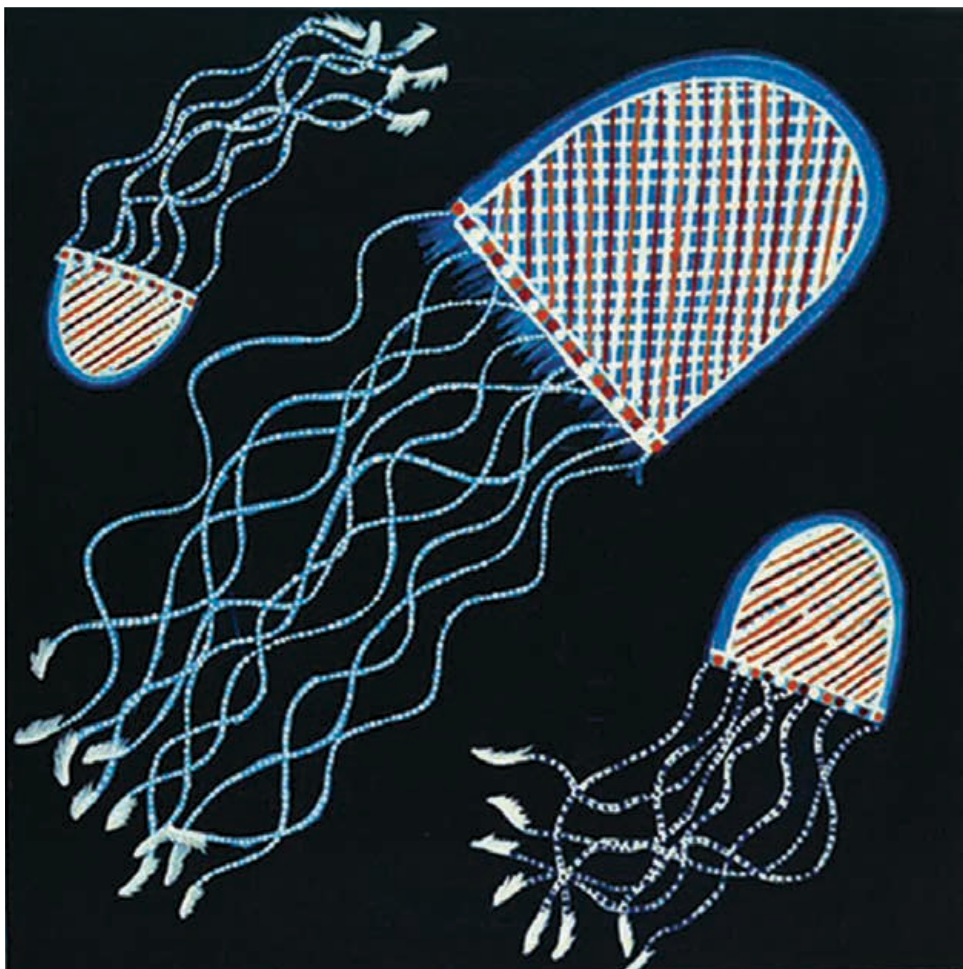
Synthetic polymer paint on canvas

60cm x 60cm

I taught myself painting when I was 12 after being inspired by my uncle. Since then I have been inspired by different Aboriginal artists, but cross-hatching is at the heart of what I do.

My style in this work is focused on bright primary colours and shapes that symbolise the crocodile and the lily weed. Everything is natural and the animals I paint means a lot in my culture.





Jeffrey MCDONALD

ST JOHN'S CATHOLIC COLLEGE

Jellyfish

Synthetic polymer paint on canvas

60cm x 60cm

I painted this jellyfish using contemporary colours to surprise the viewer, combining traditional cross hatching with the bright colours of the ocean.

Using this method of painting as my preferred style, my imaginary stingers have become my favourite subject.

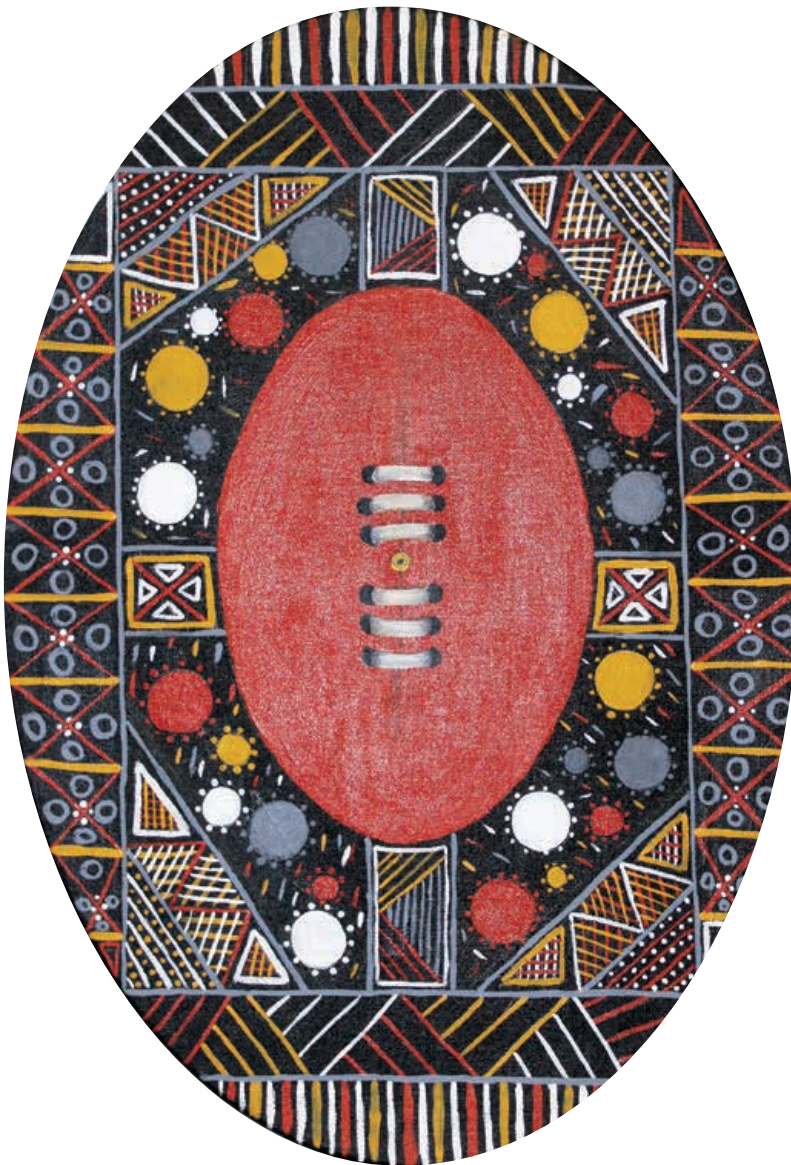
Jessica STASSI

NORTHERN TERRITORY SCHOOL
OF DISTANCE EDUCATION AND
TIWI COLLEGE

Tiwi football

Synthetic polymer paint on canvas
55cm x 35cm

Tiwi football is part of contemporary life and culture at school and for Tiwi people in general. In my design, I have combined traditional Tiwi colours and patterns with football lacing to represent two sides coming together on the football oval.



Jessica OSBORNE

THE ESSINGTON COLLEGE

Sweet tooth

Synthetic polymer paint on canvas

90cm x 122cm

I was inspired by the work of photorealist artists Charles Bell and Pedro Campos to paint in a hyper-realistic style, with a focus on achieving lifelike depth.

Whilst experimenting with colourful objects and glass containers, lollies caught my eye; in particular the range of colours, angles and light reflections. Once the desired composition was found I painted layers to create realistic depth and vibrant colours.





MERIT AWARD – CREATIVE ARTS

Jessica OSBORNE

THE ESSINGTON COLLEGE

Waves of movement

Synthetic polymer paint on canvas
90cm x 122cm

Studying the movement of water presented a great challenge. The artists Gustavo Silva Nuñez and Alyssa Monks inspired me with their works that realistically recreate the movement of water.

I enjoyed the freedom of exploring a new technique. The background is made up of many layers, different tones and brush strokes. The intention was to create the many directions of water movement, resulting in a realistic sense of depth.

Jill FLOCKHART

MARRARA CHRISTIAN COLLEGE

Inked

Mixed media

50cm x 189cm

Inked represents a stylised reflection of the impact on the world's oceans. The development of this piece was directly influenced by the artistic techniques of James Hewlett and David Lozeau, and offers an abstract perspective of the impact of pollution on ocean life.



Joshua FORD

CENTRALIAN SENIOR COLLEGE

Cheese-balls the dragon

Video of installation

163cm x 71cm x 140cm

Cheese-balls is the dragon of my personality and reflects the differences in individuals. He has human features with punk hair, bling, sunnies, a 'pimped' attitude and a bucket brunch that he eats. When he sees someone, he takes selfies to remember what he has done. His cat like pose represents his potential to attack.





Julia WOODS

O'LOUGHLIN CATHOLIC COLLEGE

**Enlightenment, Benign beliefs,
Nuclear nations, Shattered**

Mixed media

44cm x 183cm

Through the wearing of masks, this body of work represents disconnect within society.

Enlightenment symbolises society's increasing reliance on technology and social media. *Benign beliefs* bears religious phrases interconnected on a metallic sheet. *Nuclear nations* illustrates the peaceful façade countries maintain to mislead society into believing diplomatic relationships are strong, whilst also maintaining nuclear weaponry. *Shattered* explores a perfect image to society. The sharp shards reflect what others want of us, but we want to protect ourselves.



Juliette PURUNTUNTAMERI

**NORTHERN TERRITORY SCHOOL
OF DISTANCE EDUCATION AND
TIWI COLLEGE**

Artist book

Linocut on paper

21cm x 22cm x 90cm

I have been inspired by my Tiwi Indigenous culture and the work of printmaker Dianne Fogwell to carve and print local leaves. Different shades of grey ink were used to create depth and space in the work.

Kadu BARNs

CENTRALIAN SENIOR COLLEGE

Catalyst

Pencil on paper

89cm x 110cm

Catalyst represents itself as change, revealing the potential transition subjects have to form beautiful, never before seen creatures or horrible monsters. By creating new characters, the viewer is asked to imagine. Influenced by the work of Ernst Haeckel, I found a way to combine the creatures of illustration with scientific discovery into new exotic life forms.



Kaila GORDON

THE ESSINGTON COLLEGE

Tibetan woman

Synthetic polymer paint on canvas

122cm x 90cm

My work is inspired by globally diverse cultures, traditional dress and an interest in facial features. Studying the roles of women and their clothes, the colours of Tibetan culture became central to my work.

The traditional dress of *Tibetan woman* represents the culture that engulfs and guides her life. The woman has a symmetrical face and body, the eyes stare straight at the viewer, capturing a sense of familiarity and affection.





Kate CAMPBELL BROGAN

ST PHILIP'S COLLEGE

Glimpses of an eye

Photograph

(1/9 prints)

I was inspired by photographer Iain Crawford's fascinating images that are bright and full of life.

Fast shutter speeds are used in photography to capture fast moving objects. Using straightforward camera functions, I sped up the shutter speed and increased the aperture. This meant I could capture the 'moment in time' without underexposing the image.

Kylie LO

DARWIN HIGH SCHOOL

Seeing the unseen

Pencil on paper

76.5cm x 56.6cm

Within the garden scene, what awaits the girl is unseen.

From Leonardo Da Vinci's observations of marks, smudges and cracks on the wall and floors, we can conjure up images of faces, landscapes and creatures.

In this work, a garden full of plants and flowers, forms and shadows combine to create the unseen. A group of flowers and the elements of their construction form a little creature. The unseen is in the detail.





Kylie LO

DARWIN HIGH SCHOOL

Synaptic imagination

Pencil on paper

76.5cm x 56.6cm

This image looks at the connection between the imagination and the surreal landscape of the brain. *Synaptic imagination* comprises of neuron trees and bio electrical synapses, and the connections between them. The trees form a forest and caves of memories are represented by the field of plant like structures, full of imagined figures.

Lana LAURELES

DARWIN HIGH SCHOOL

Home

Synthetic polymer paint and
watercolour on paper
120cm x 120cm

Home explores the theme of sanctuary. Inspired by the people of Syria seeking refuge and a safe haven from war, the mausoleum sized doll's house signifies the children's eminent death from living in a war zone. The doll's house creates a representational sanctuary for the children, as death may be their only escape.

My painting technique was influenced by Edward Hooper's use of stumbling and thinly applied layers of textured paint.



Laura SIMON

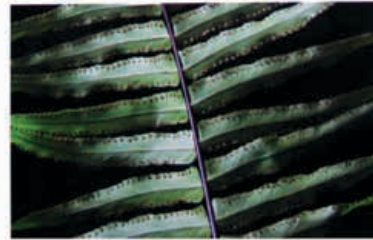
KORMILDA COLLEGE

Still life

Photograph

120cm x 44cm

Inspired by the artists Edward Weston, Robert Mapplethorpe and Robyn Stacey, I used studio lighting and macro photography to highlight natural everyday objects. I focused on textures and natural colour that give the objects their beauty.





Lilly PAZNIEWSKI

DARWIN HIGH SCHOOL

Untitled

Photograph

30cm x 42cm each

Surrealism enabled me to focus on making the possibility of human physical peculiarity come alive for the viewer. I looked at the supernatural side of stories, the history of myths and legends through unbelievable freaky works of art.



Louis LEJEUNE

DARWIN HIGH SCHOOL

5 X A2

Inkjet print on paper

42cm x 58cm each (1/5 prints)

I wanted this work to raise public awareness of various mental illnesses and the way sufferers see the world.

Influenced by the imagery of Duane Michals, I would like my work to encourage the viewer to be kind and respectful to people, even if what they are thinking and going through isn't known.

Mai ROSE

DARWIN HIGH SCHOOL

Hard exterior

Photograph

29.7cm x 42cm

This image portrays one's need to wear a mask, to hide emotions and appear in control. However, sometimes the mask begins to take over until eventually one doesn't care or feel anything at all. The mask becomes you.

The mask is portrayed by embedding the triangles into the skin, and fading them out to create the effect of consuming, pushing and peeling at the skin.



Mai ROSE

DARWIN HIGH SCHOOL

'Lara' and 'Siren'

Digital inkjet print

42cm x 60cm (each)

The two character designs of Lara are based on a Brazilian legend.

The Amazon was a huge inspiration. I incorporated soft shading to keep the design organic, with colours that allude to the earth. I worked to harmonise and fade the scales of the second design to make a link to the original depiction of Lara as a snake called Mboiaçu, and to convey the idea of the scales slowly consuming her as she was cursed to grow a tail.



Marmie BOWEN

KORMILDA COLLEGE

Shibori scarves

Indigo on silk

120cm x 30cm

This series of scarves was designed using the Japanese resist technique of Shibori. I incorporated a range of techniques including Itajime shapes, Arashi pole wrapping and Kumo spider webbing. Once dipped in natural indigo and exposed to the sun, the designs were transformed from green to a deep indigo blue.





Pio GILLMAC III

CASUARINA SENIOR COLLEGE

By nature's grace

Synthetic polymer paint on ply board

143cm x 191cm

All of humanity is connected by the desire to live, but without respect for nature, can we ever survive and coexist?

By nature's grace explores the environmental and economic implications of food production as part of an effort for greater social consciousness towards the issue of food security. It also conveys the need for true compassion to eliminate the suffering caused by severe malnourishment, as well as an indignity to humanity.



Rebecca PEARCE

CASUARINA SENIOR COLLEGE

Unlimited bonds – Sisterhood

Watercolour on paper

89cm x 67cm each

Unlimited bonds are a series of watercolour portraits called *Sisterhood*.

I loved creating the portraits and producing artworks, in what was to me, a different style.

I love my sisters, and interpreting the love I have for them in watercolour has made me extremely happy. By not only viewing them as my sisters, but also as my subjects, I have gained a closer bond with each of them.

Ruby ROBERTSON-POWER

ST PHILIP'S COLLEGE

Untitled

Video of installation

Early in 2016, a scientist from the National Oceanic and Atmospheric Administration saw a jellyfish near the Mariana Trench that had never been documented before. This moment was significant because it was the difference between a species existing and not existing.

Thinking of time in this way enables me to connect to these moments. These jellyfish are ghosts, not necessarily of people but of moments lost in time. They are a reminder that all we have is the now.





Ruby ROBERTSON-POWER

ST PHILIP'S COLLEGE

Astronaut

Ink and charcoal on Hosho and watercolour paper, mixed media
45cm x 52cm

In *Astronaut*, I wanted to discuss the impact of place upon the everyday actions of the individual and our identities. Despite global warming and other impacts, we feel somehow removed from, or more powerful than nature. The red stitching in the figure is an illustration of this interconnectedness.

I wanted to pose the question "if we sever ourselves from the natural world, what happens to our identity?"

Shania PURUNTATAMERI

NORTHERN TERRITORY SCHOOL
OF DISTANCE EDUCATION AND
TIWI COLLEGE

Pukamani Pole

Synthetic polymer paint on iron wood
60cm x 15cm

In Tiwi culture, poles are used for ceremonies at funerals and are also made as artworks. Although I have incorporated traditional Tiwi colours, my designs are new and contemporary.



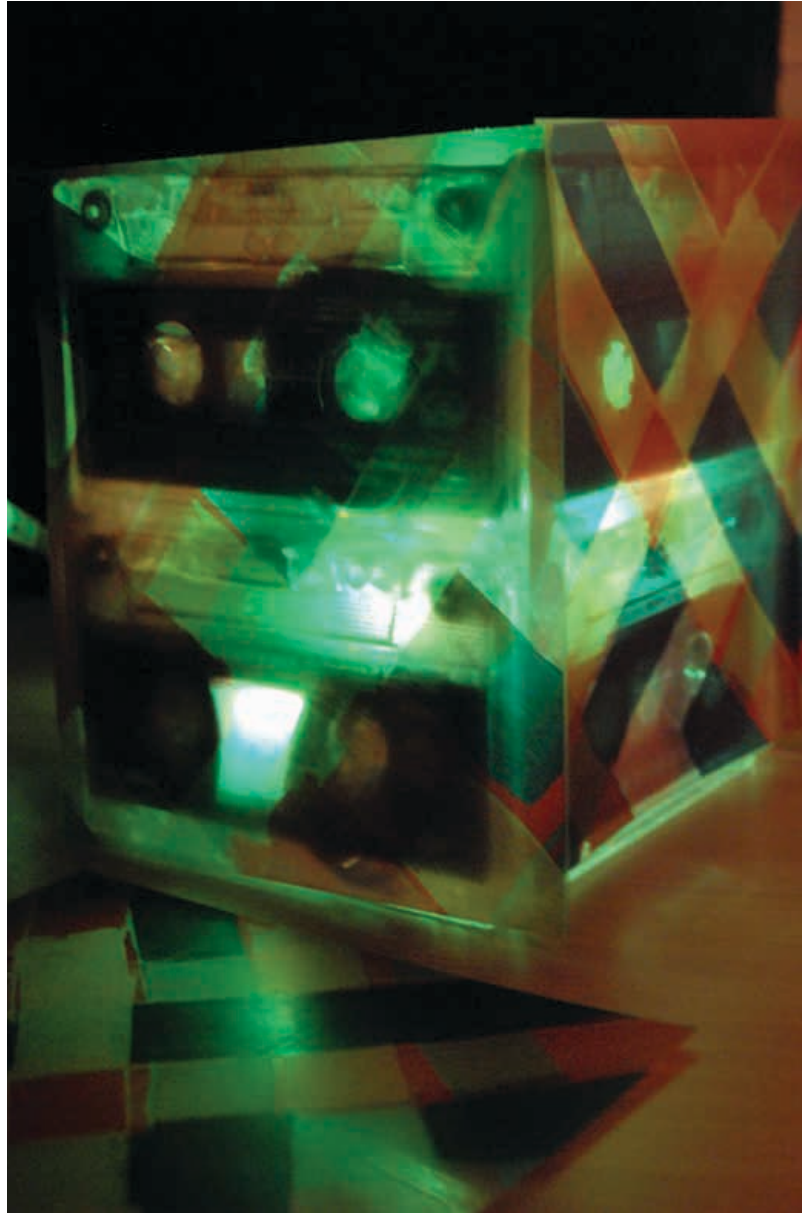
Tiandra CAMPBELL

CENTRALIAN SENIOR COLLEGE

Synaesthesia

Video

Synaesthesia conveys a sensory experience through woven colours and constructed timbres (sound). Pitched at different levels, each mini rainbow cassette tower pulsates with light. The kinetic rhythms echo a sense of joy, and movement invites the viewer to dance. Scattered throughout are the colourful woven sheet music bars ready to be interpreted as a new sensation.



Tommy TRAN

CENTRALIAN SENIOR COLLEGE

Alois Trancy in Wonderland

Digital print

75cm x 50cm

This photograph is a deviation from the Alice in Wonderland story and shows the transformation of a young English Earl and what might happen if he became Alice. In the image he is almost under attack by the army cards, but is still composed and appears to have a slight smirk.



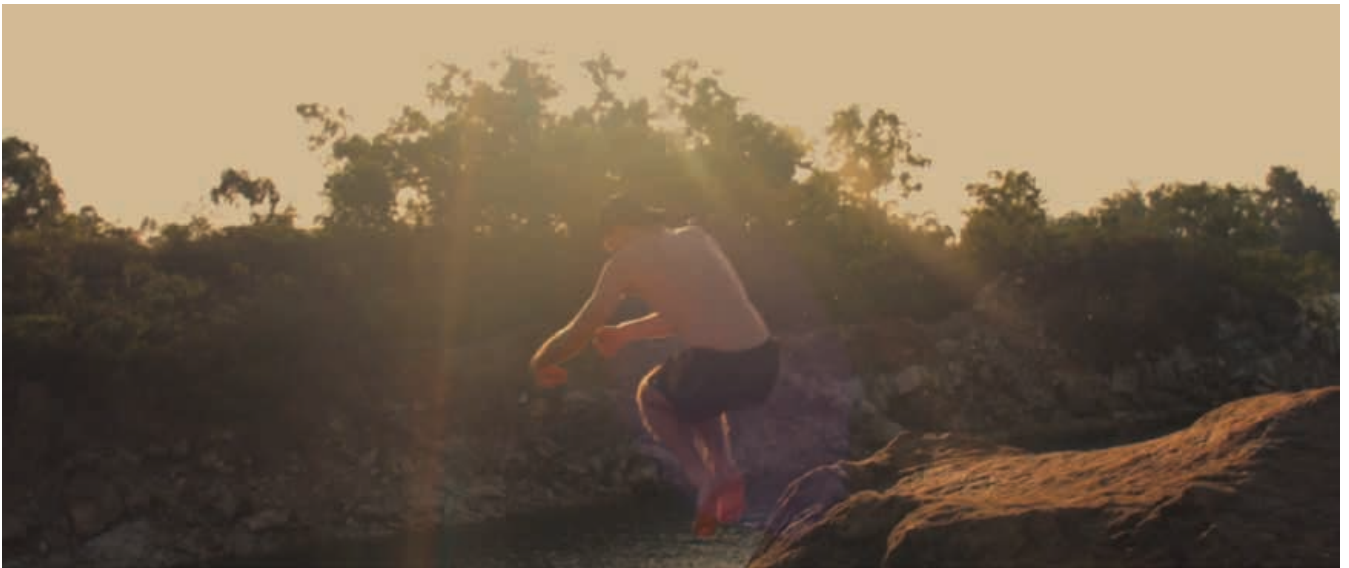
Tully HEMSLEY

DARWIN HIGH SCHOOL

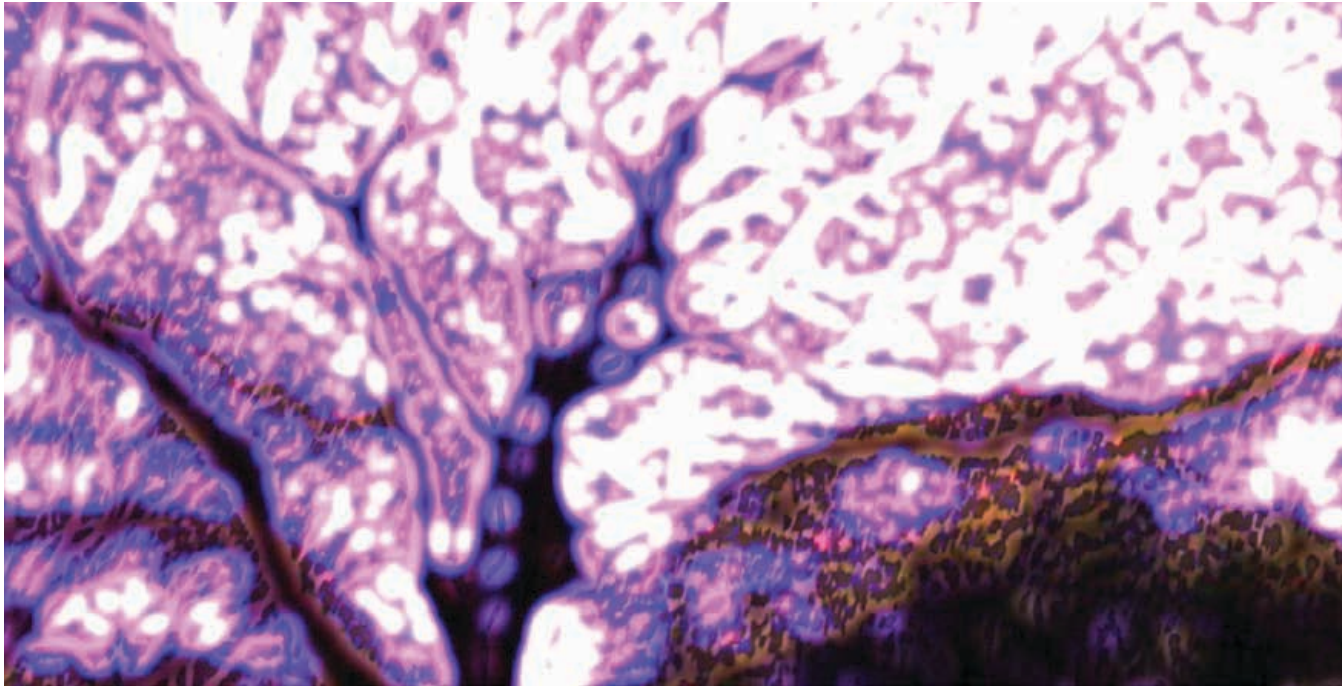
Limbo

Video

Based on a true story, I focussed on the theme of near-death experiences after witnessing my friend nearly drown at a local quarry. My film takes an adolescent perspective and looks at 'mateship', youth risk taking, peer pressure and how accidents and death can be the result of bad choices made by young males. My youthful visual style was inspired by Ericson Core's film *Point Break* (2015) so I shot the film handheld, giving a sense of realism and movement.



MERIT AWARD – VISUAL ARTS



Tully HEMSLEY

DARWIN HIGH SCHOOL

Reality

Video

My film visualises the perceived realities of three characters with altered states of mind influenced by directors Gasper Noe and Dexter Navy.

The first sequence imagines a dehydrated man wondering the bushland, the second shows a homeless schizophrenic on the streets and the third enters the mind of a hedonistic man who loses grip of reality brought on by drug inducement. My film relies heavily on film techniques and visual effects to enhance each different disorder.

William TARRANT

CASUARINA SENIOR COLLEGE

A place to call home

Synthetic polymer paint on board

48cm x 58cm

A place to call home was inspired by the artist Howard Arkley's depiction of houses in the Melbourne suburbs. Arkley stated that, 'the suburbs... are quite simply my life.' It was very important to me to create an artwork that captures my feelings of home. I achieved this through my use of colour, each one representing a feeling I have when I think of home. Yellows and oranges represent warmth and the embracing feeling of family whilst greens and blues speak of calmness & happiness. Finally, the purple represents being 'chilled out' at home.



SPONSORS



ACKNOWLEDGMENTS

Compilation: Jenny Shepard and Carrie Mulford

Graphic Design: Maria Mosquera

Printing: Page 38

ISBN: 978-0-646-96797-4

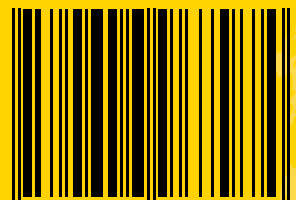
For a digital copy of this catalogue:

Visit magnt.net.au

Call +61 8 8999 8264

Email info@magnt.net.au

ISBN 978-0-646-96797-4



9 780646 967974 >

**MUSEUM
AND ART
GALLERY**
NORTHERN
TERRITORY



Proudly sponsored by
**NORTHERN
TERRITORY**
GOVERNMENT

**MUSEUM AND ART GALLERY
OF THE NORTHERN TERRITORY**

19 Conacher Street
The Gardens, Darwin NT 0820
GPO Box 4646, Darwin NT 0801
e. info@magnt.net.au
t. +61 8 8999 8264
magnt.net.au